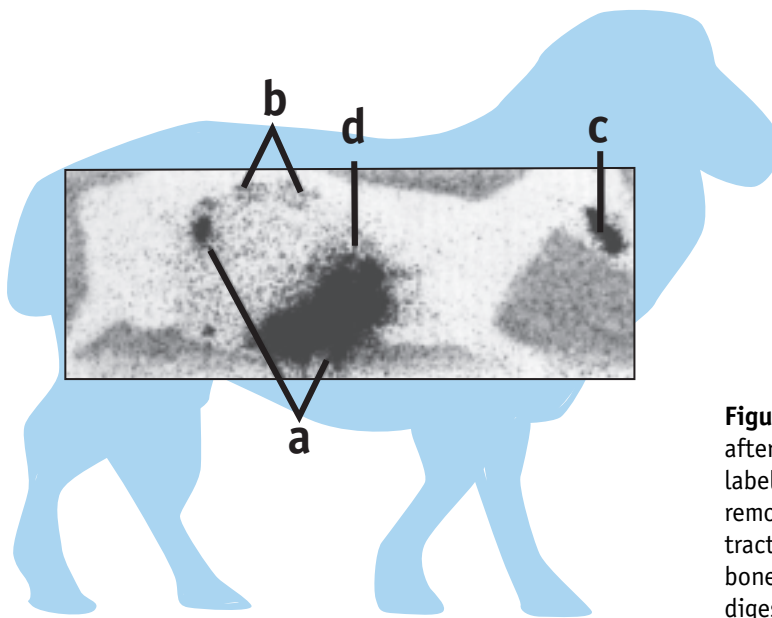


DENTAL AMALGAMS AND MERCURY'S JOURNEY THROUGH THE BODY

In *Wellness Piece By Piece*, Pat Sullivan takes a close look at the dangers of mercury and heavy metal toxicity in the body resulting from dental amalgams. Pat experienced the ill-effects of the metal in his system firsthand and turns to a couple scientific studies to validate his case.

More than 15 years ago, researchers undertook experiments to discover how radioactively-tagged mercury in dental amalgams is distributed throughout the body and retained in the tissues. Placing mercury fillings in the mouths of a sheep and monkey, they found dramatic levels of the metal in the kidney, stomach and liver of each animal after less than one month! Because the radioactive mercury used in the experiment isn't found in nature, the guilt of the dental amalgams is difficult to deny.



LEVELS OF MERCURY	
Tissue	ngHg/g
Feces	4489.3
Kidney	7438.0
Stomach	929.0
Liver	772.1

Figure 1 - Full body scan of a sheep 29 days after placement of 12 occlusal amalgams labeled with ^{203}Hg . The fillings were removed prior to the scan. (a) digestive tract. (b) kidneys. (c) gums and alveolar bone. (d) liver, partially obscured by the digestive tract. (From Hahn, et. al., 1989)

Figure 2 - Full body scan of a monkey 28 days after the placement of 16 occlusal fillings, labeled with ^{203}Hg , showing radioactivity in the jaws, kidneys and GI tract. (A) ventral view. (B) dorsal view. (C) dorsal view with the GI tract removed, clearly showing radioactive mercury accumulation in the kidneys. (From Hahn, et. al., 1990)

